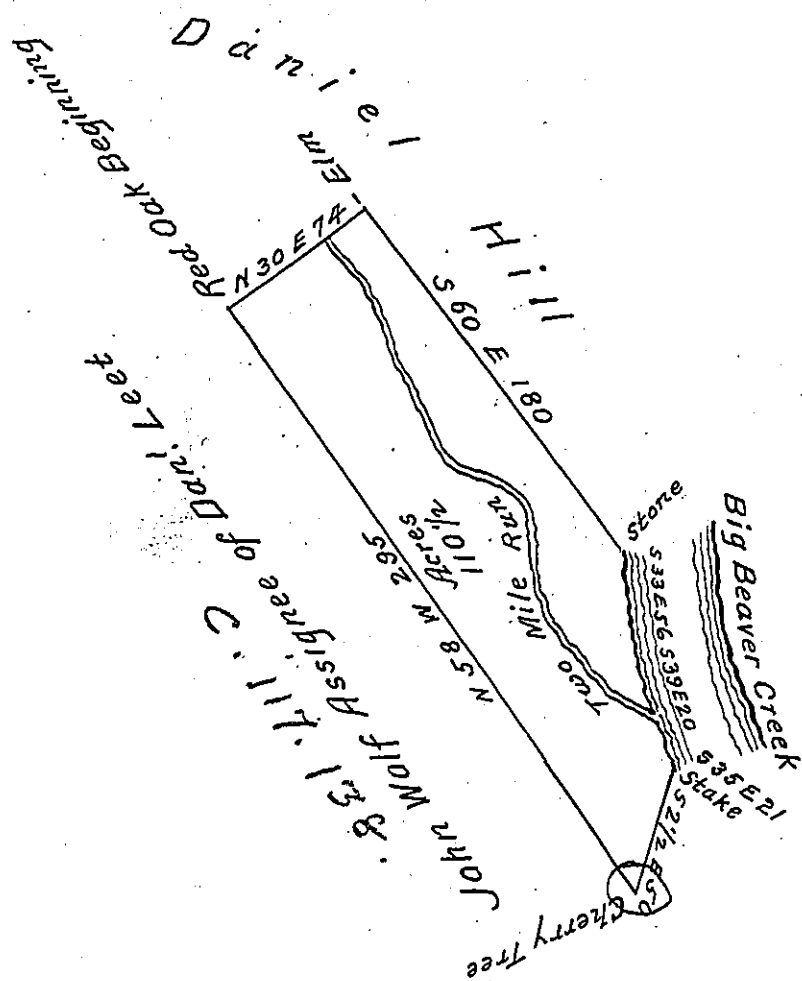


✓



A Draught of a Tract of Land Surveyed the Ninth day of April, 1796, In pursuance of a Warrant Granted to Daniel Leet for 100 Acres of Land, Situate on the West bank of Big Beaver creek Including the Mouth of the two Mile run binding on the line of the Reserved Tract at the Mouth of Said Creek Which Said Warrant was dated the fourth day of April 1792, Galled "Mill Seat" Containing one hundred and ten Acres and eighty poles together with the usual allowance of Six p<sup>ct</sup> Cent for Roads.

To Daniel Brodhead Esq<sup>r</sup> } Jonathan Leet D.S.  
 Surveyor General. ~ } South Beaver Township  
 Beaver County.

IN TESTIMONY that the above is a copy of the original remaining on file in the Department of Internal Affairs of Pennsylvania, made conformably to an Act of Assembly approved the 16th day of February, 1833, I have hereunto set my Hand and caused the Seal of said Department to be affixed at Harrisburg, this twenty-fourth day of August 1905

*Grace R. Brown*  
 Secretary of Internal Affairs.